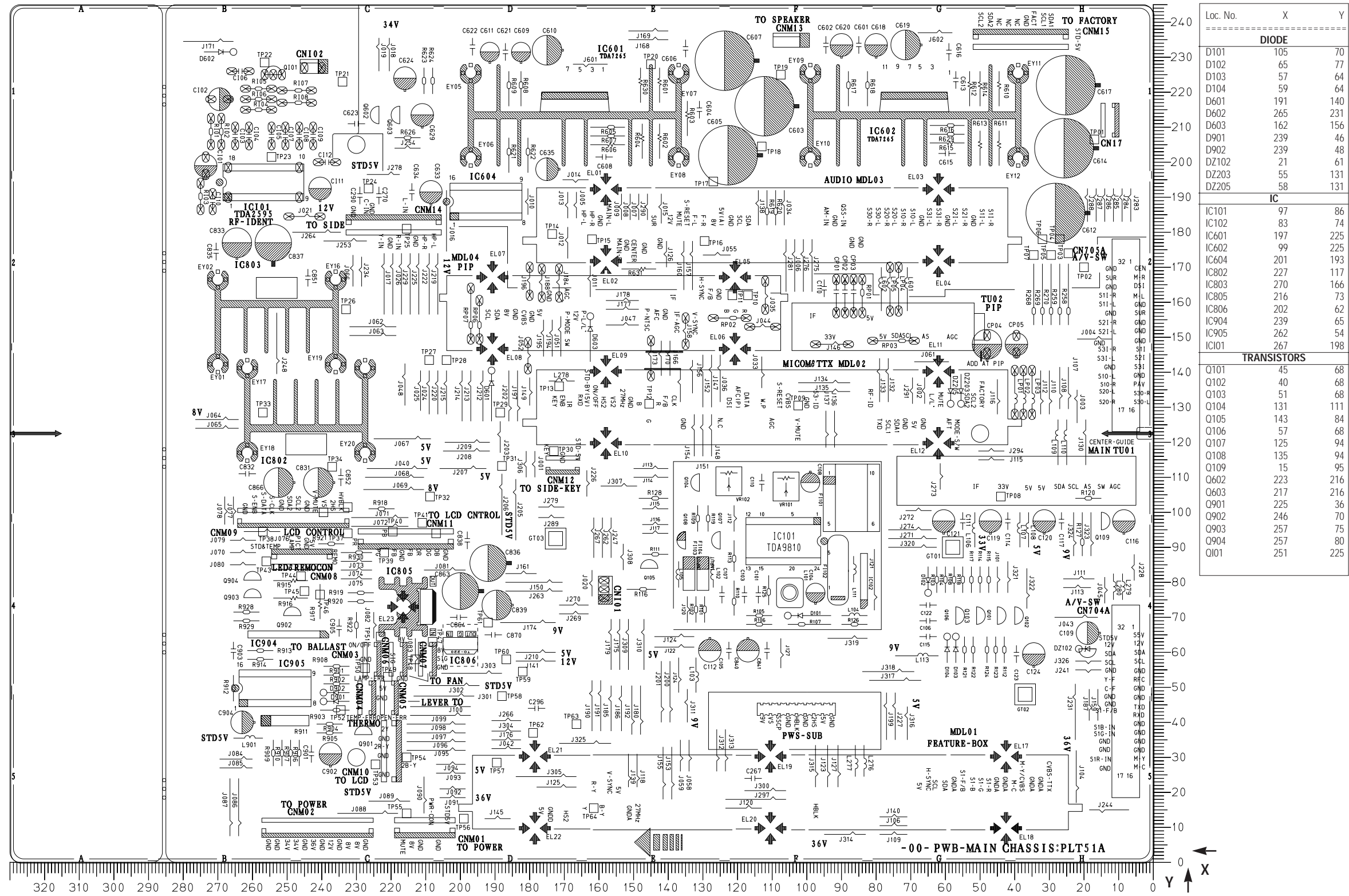


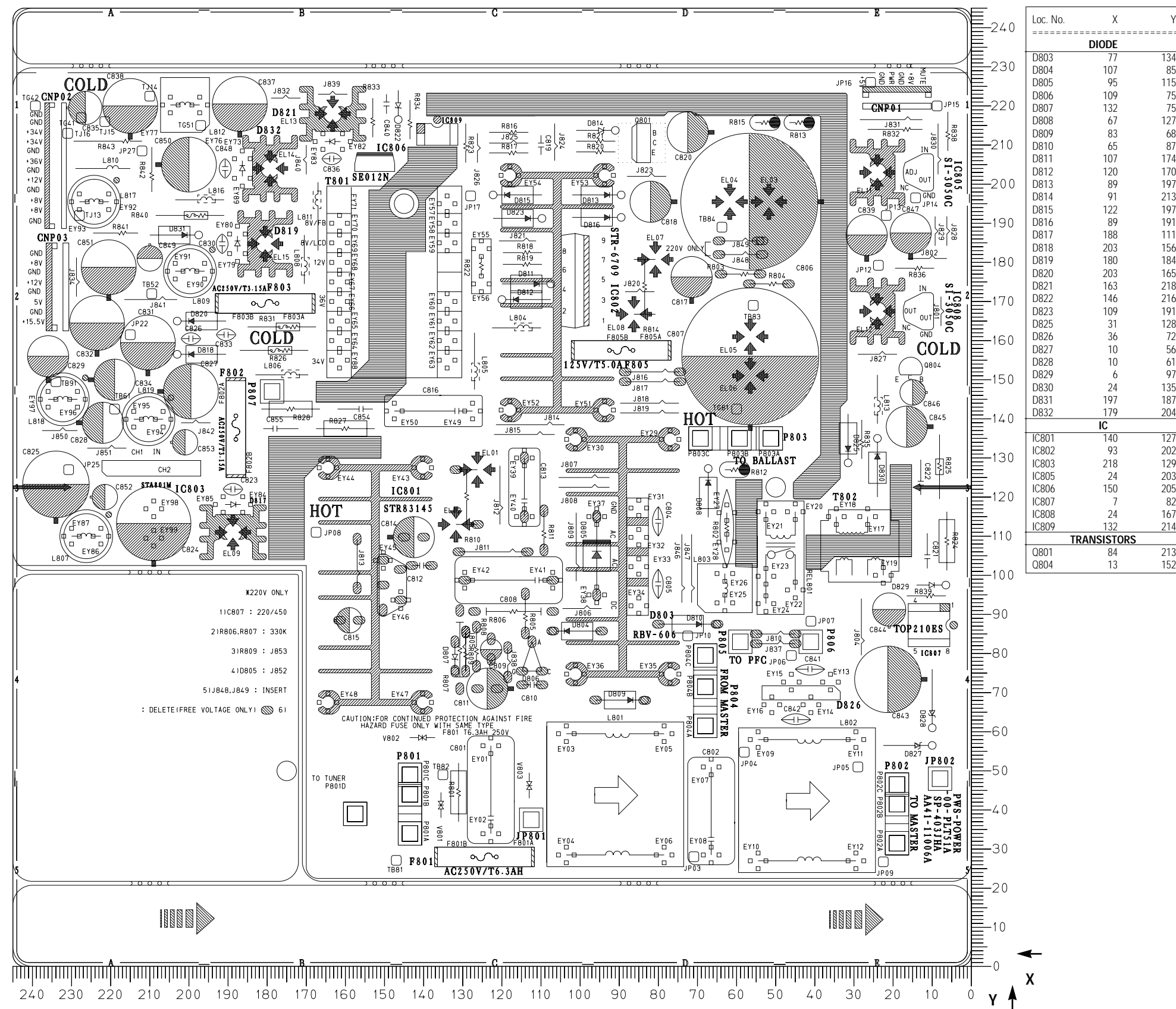
# 10. PCB Layout Diagram

## 10-1 PCB-MAIN

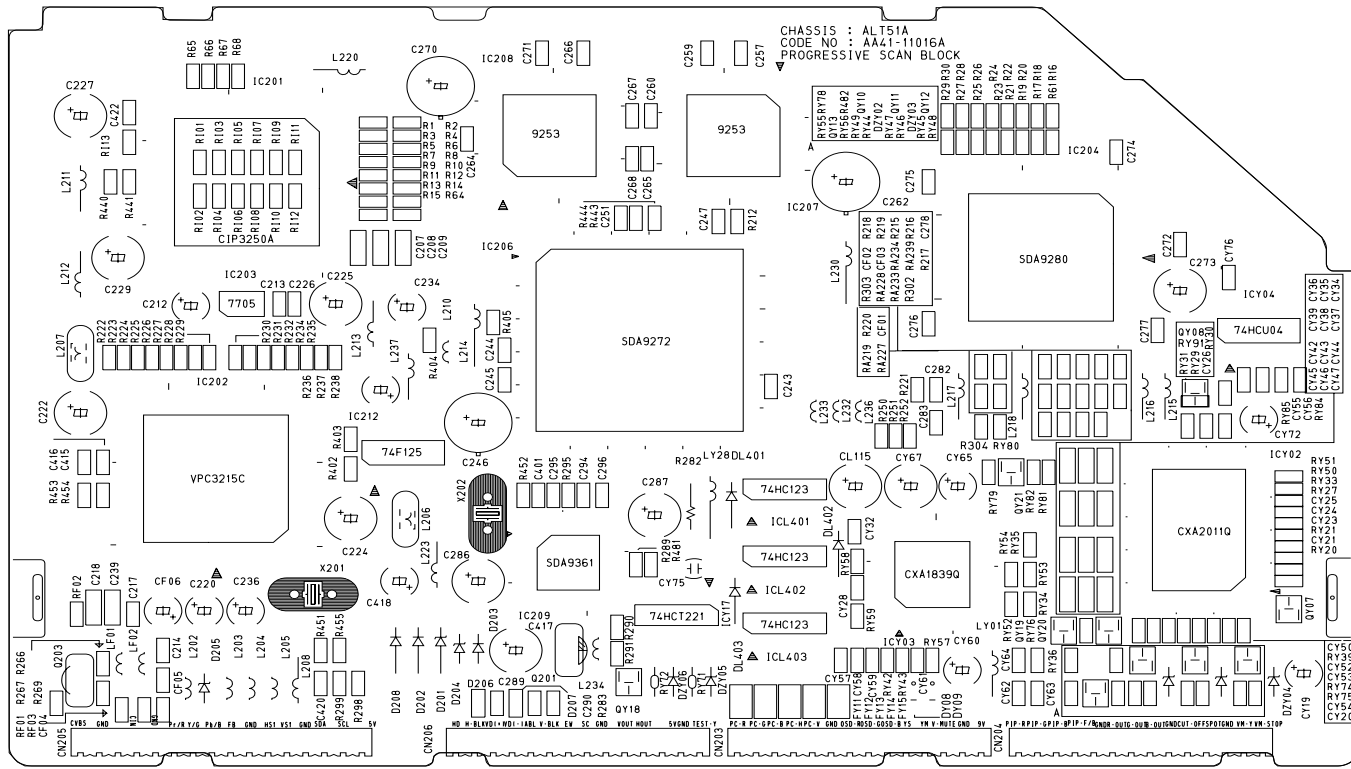


Loc. No.	X	Y
DIODE		
D101	105	70
D102	65	77
D103	57	64
D104	59	64
D601	191	140
D602	265	231
D603	162	156
D901	239	46
D902	239	48
DZ102	21	61
DZ203	55	131
DZ205	58	131
IC		
IC101	97	86
IC102	83	74
IC601	197	225
IC602	99	225
IC604	201	193
IC802	227	117
IC803	270	166
IC805	216	73
IC806	202	62
IC904	239	65
IC905	262	54
IC101	267	198
TRANSISTORS		
Q101	45	68
Q102	40	68
Q103	51	68
Q104	131	111
Q105	143	84
Q106	57	68
Q107	125	94
Q108	135	94
Q109	15	95
O602	223	216
O603	217	216
O901	225	36
O902	246	70
O903	257	75
O904	257	80
Q101	251	225

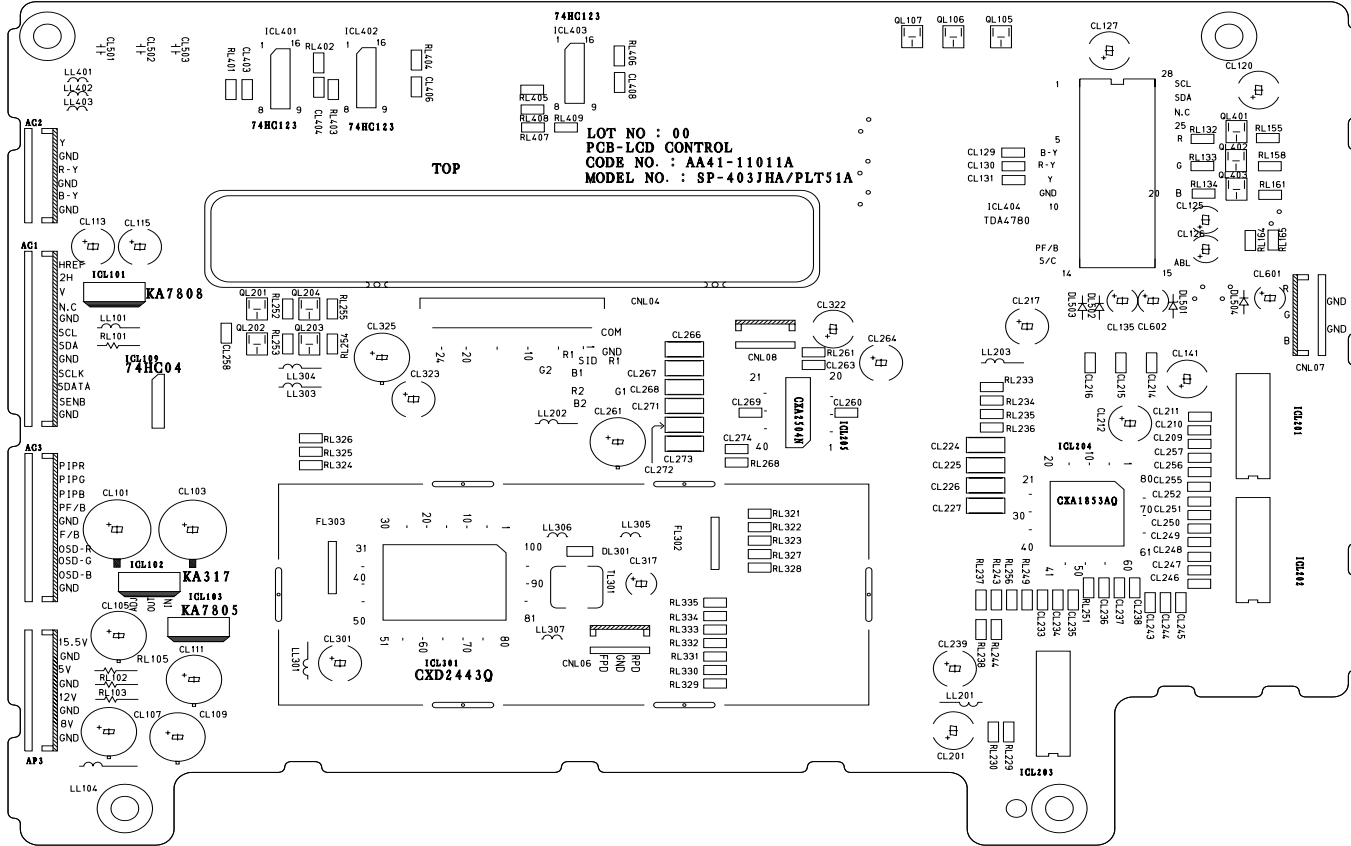
### 10-2 PCB-POWER



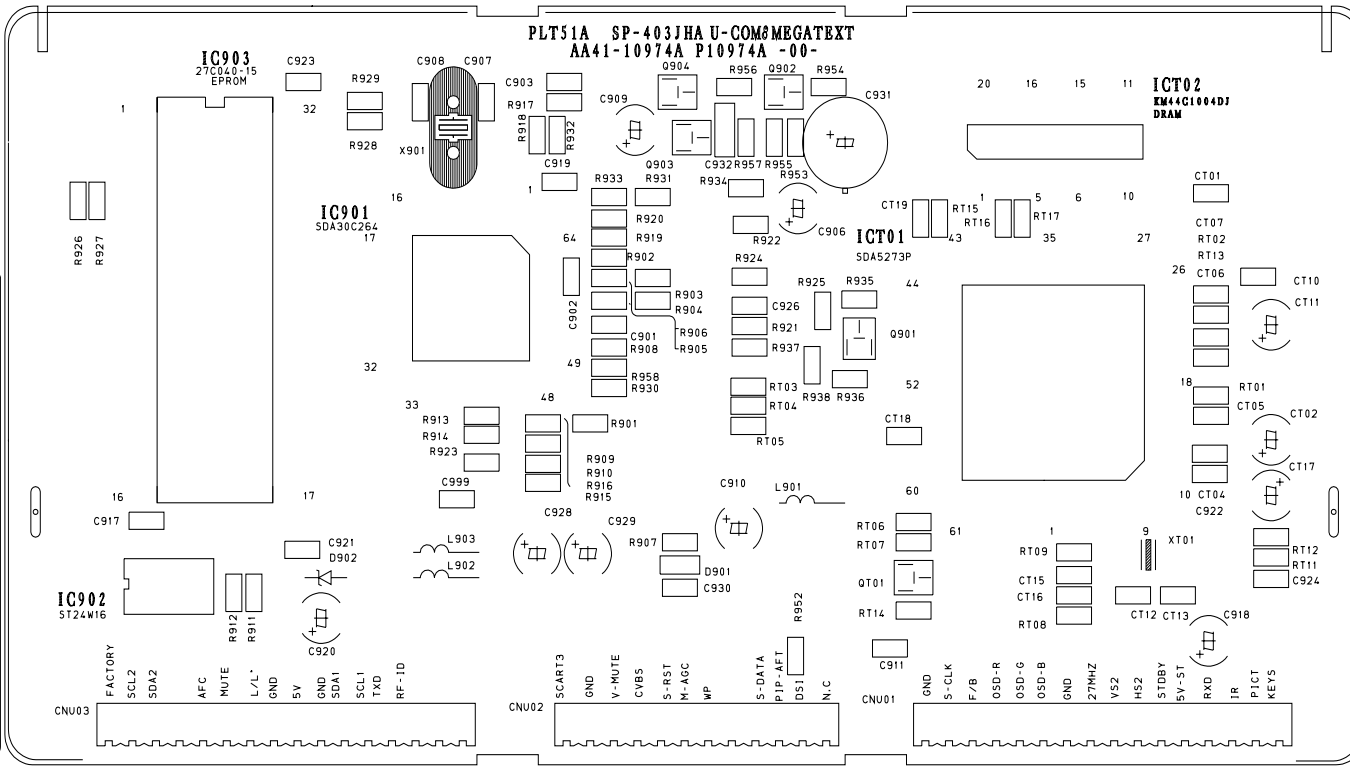
### 10-3 PCB-PROGRESSIVE



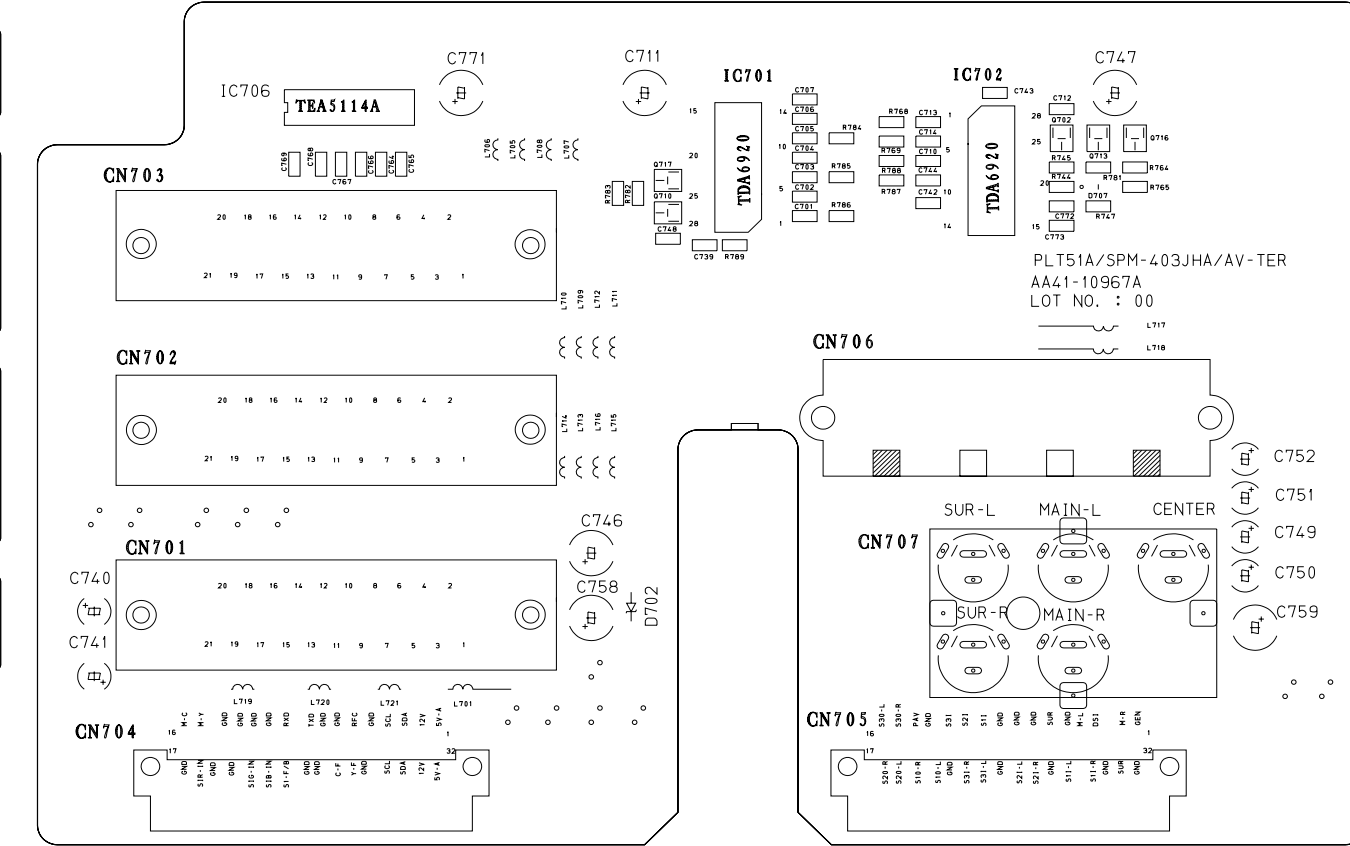
### 10-5 PCB-LCD CONTROL



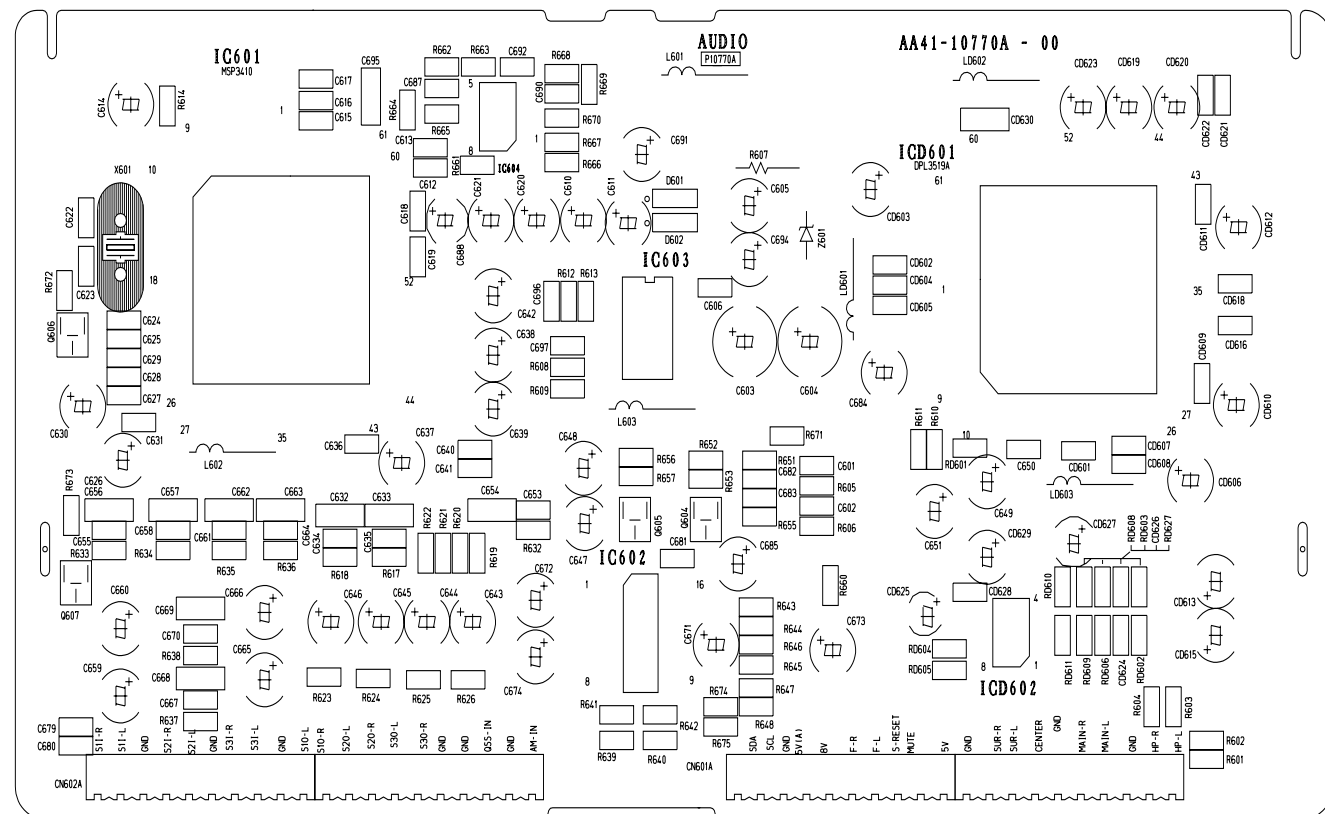
### 10-4 PCB u-COM



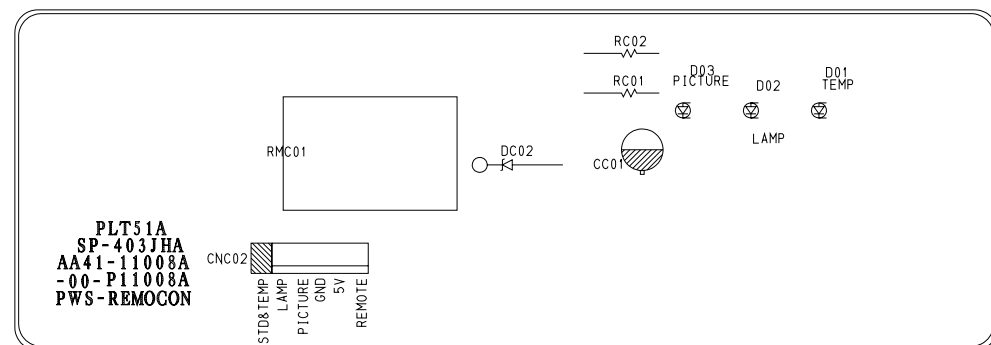
### 10-6 PCB-A/V TERMINAL



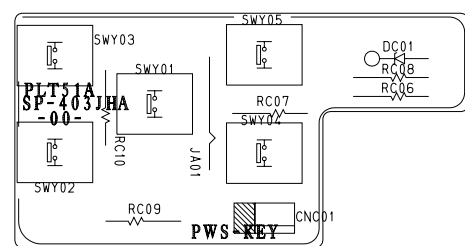
### 10-7 PCB-AUDIO



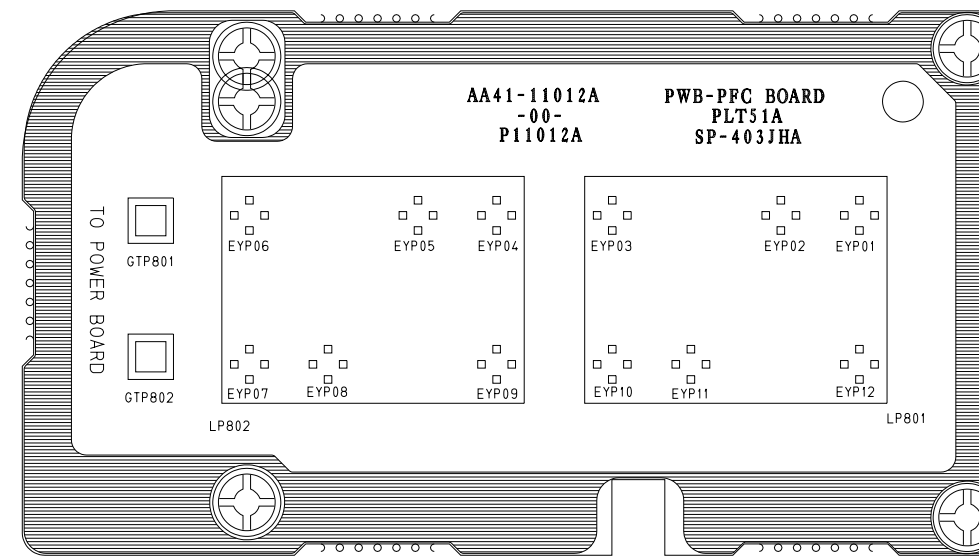
### 10-9 PCB-REMOCON



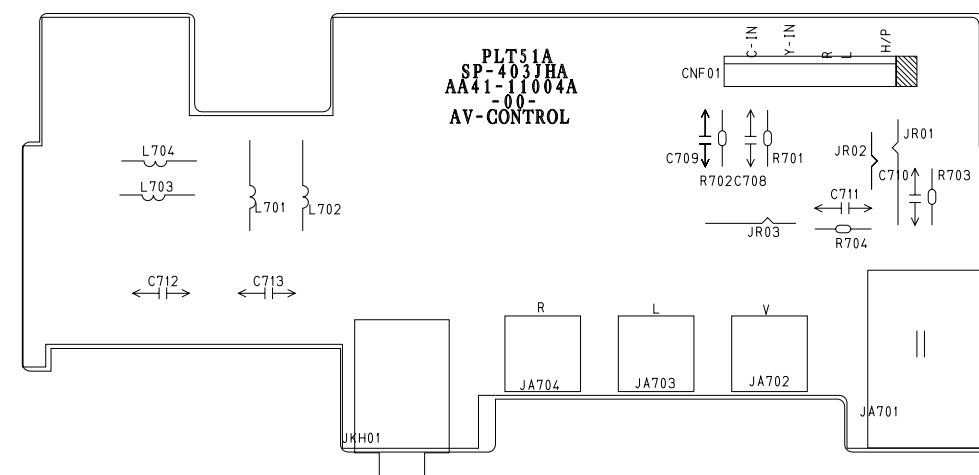
### 10-11 PCB-SIDE KEY



### 10-8 PCB-PFC



### 10-10 PCB-A/V CONTROL



### 10-12 PCB-MASTER S/W

